

## 5-meter Car Turntable Specification

Model: ZX5000C-W330

### Turntable Details:

Diameter:	5,000 mm
Height:	330 mm (include 75mm height angle steel on edge)
Load Capability:	7,000 kg
Rotation Speed:	0.2 ~ 1.0 RPM
Speed Control:	Various speed control
Motor Power:	1.1 kW
Top Surface:	4mm thick diamond tread steel plate+75mm height angle steel edge
Installation Weight:	1,849 kg
Turntable foundation:	Concrete pit
Uniformly distributed load:	4.51 kPa

### Design and Construction:

The design of turntable includes:

Structure:	Fan-shaped Structure frame combined
Center bearing, Motor drive, Support Wheels:	Fixed to the ground
Drive Method:	Weizhong Patent Pin-Gear Drive System
Surface Treatment:	Hot-dipped galvanized

### Control System Information:

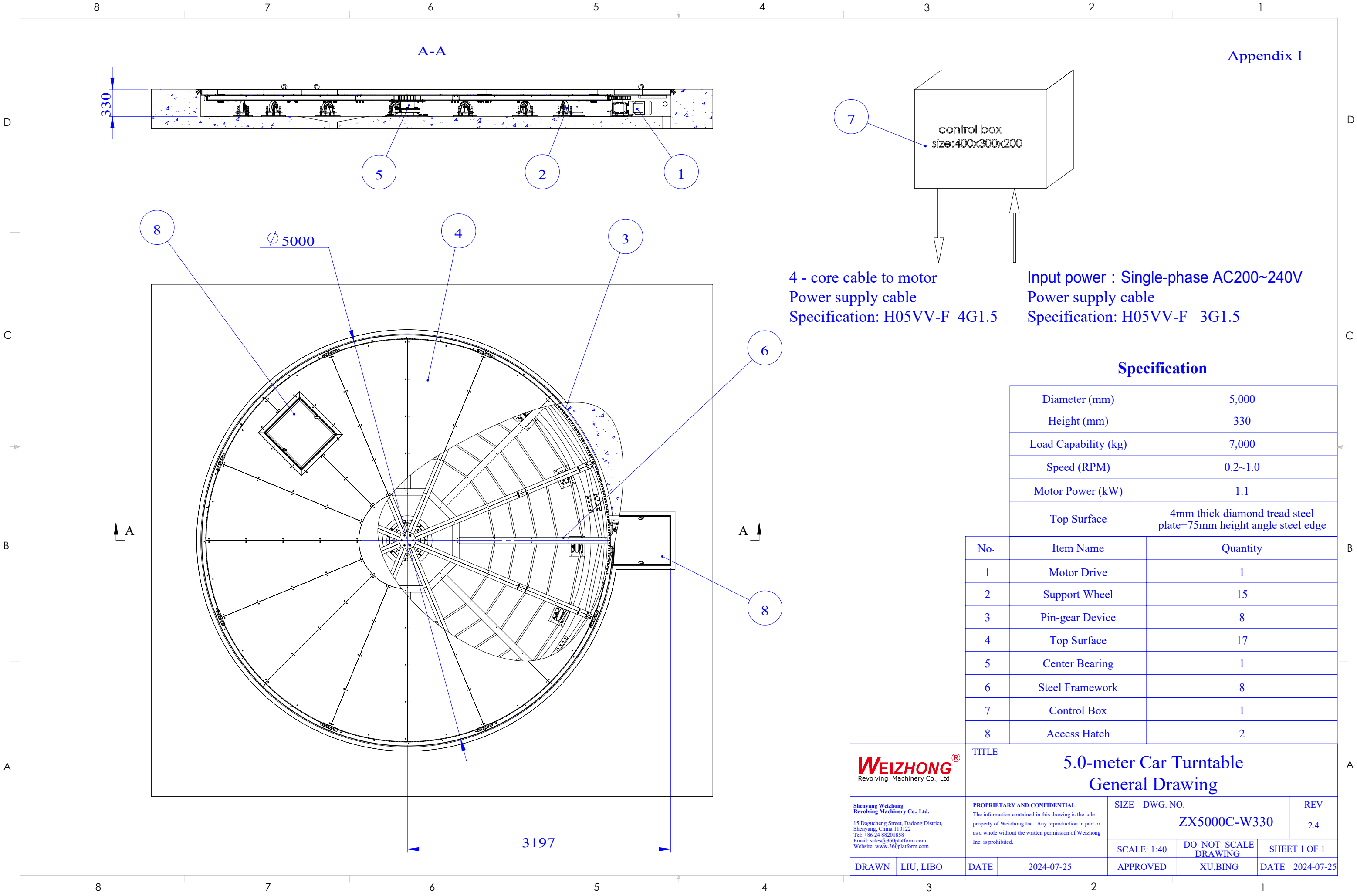
Function:	On/Off, clockwise/anti-clockwise, various speed control, emergency stop
Power Required:	Single phase 200~240V AC,50Hz/60Hz; Max current: 10A
Control Box:	Fixed installation
Remote Control:	Optional

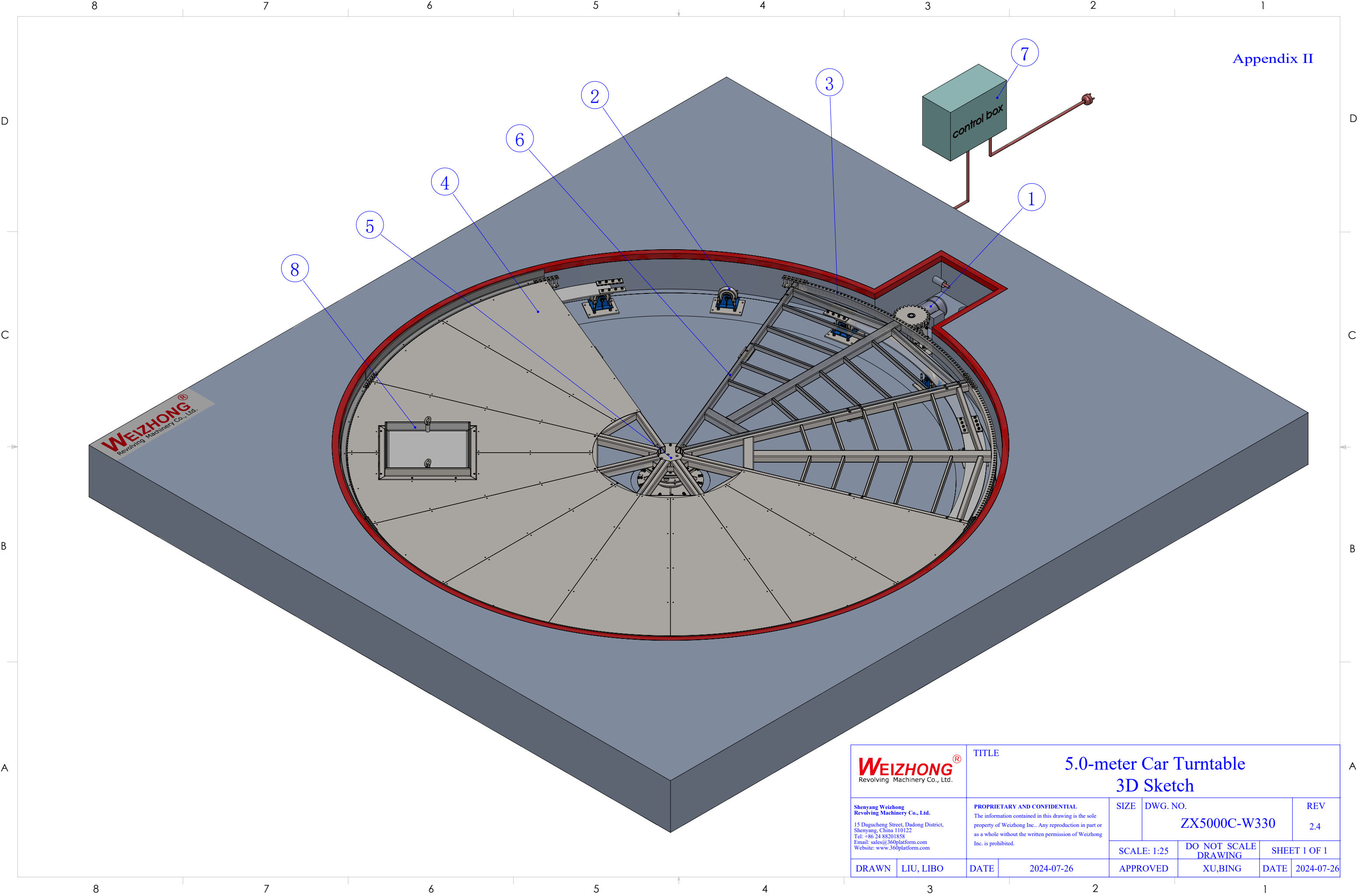
### General Information:

General Drawing:	Appendix I
3D Sketch:	Appendix II
Pit Drawing:	Appendix III

### Note:

The unit of length used in all drawings is metric millimeter





<div><div><div>WEIZHONG®</div><div>Revolving Machinery Co., Ltd.</div></div><div><div>Shenyang Weizhong Revolving Machinery Co., Ltd.</div><div>15 Dagucheng Street, Dadong District, Shenyang, China 110122 Tel: +86 24 88201858 Email: sales@360platform.com Website: www.360platform.com</div></div></div>		<div>TITLE</div> <div>5.0-meter Car Turntable</div> <div>3D Sketch</div>						
		<div>PROPRIETARY AND CONFIDENTIAL</div> <div>The information contained in this drawing is the sole property of Weizhong Inc.. Any reproduction in part or as a whole without the written permission of Weizhong Inc. is prohibited.</div>		SIZE	DWG. NO.		REV	
					ZX5000C-W330		2.4	
DRAWN	LIU, LIBO	DATE	2024-07-26	APPROVED	SCALE: 1:25	DO NOT SCALE DRAWING	SHEET 1 OF 1	
						XU,BING	DATE 2024-07-26	

