

## 10-meter Truck Turntable Specification

Model: TT10000S-30T

### Turntable Details:

Diameter:	10,000 mm
Height:	500 mm
Load Capability:	≤ 30,000 kg
Rotation Speed:	0.3 ~ 1.0 RPM
Speed Control:	Various speed control
Motor Power:	9.2 kW
Top Surface:	8 mm thick checkered steel plate
Installation Weight:	13,500 kg
Turntable foundation:	Concrete pit
Uniformly distributed load:	4 kPa

### Design and Construction:

The design of turntable includes:

Structure:	Fan-shaped Structure frame combined
Center bearing, Motor drive, Support Wheels:	Fixed to the ground
Drive Method:	Weizhong Patent Pin-Gear Drive System
Surface Treatment:	Hot-dipped galvanized

### Control System Information:

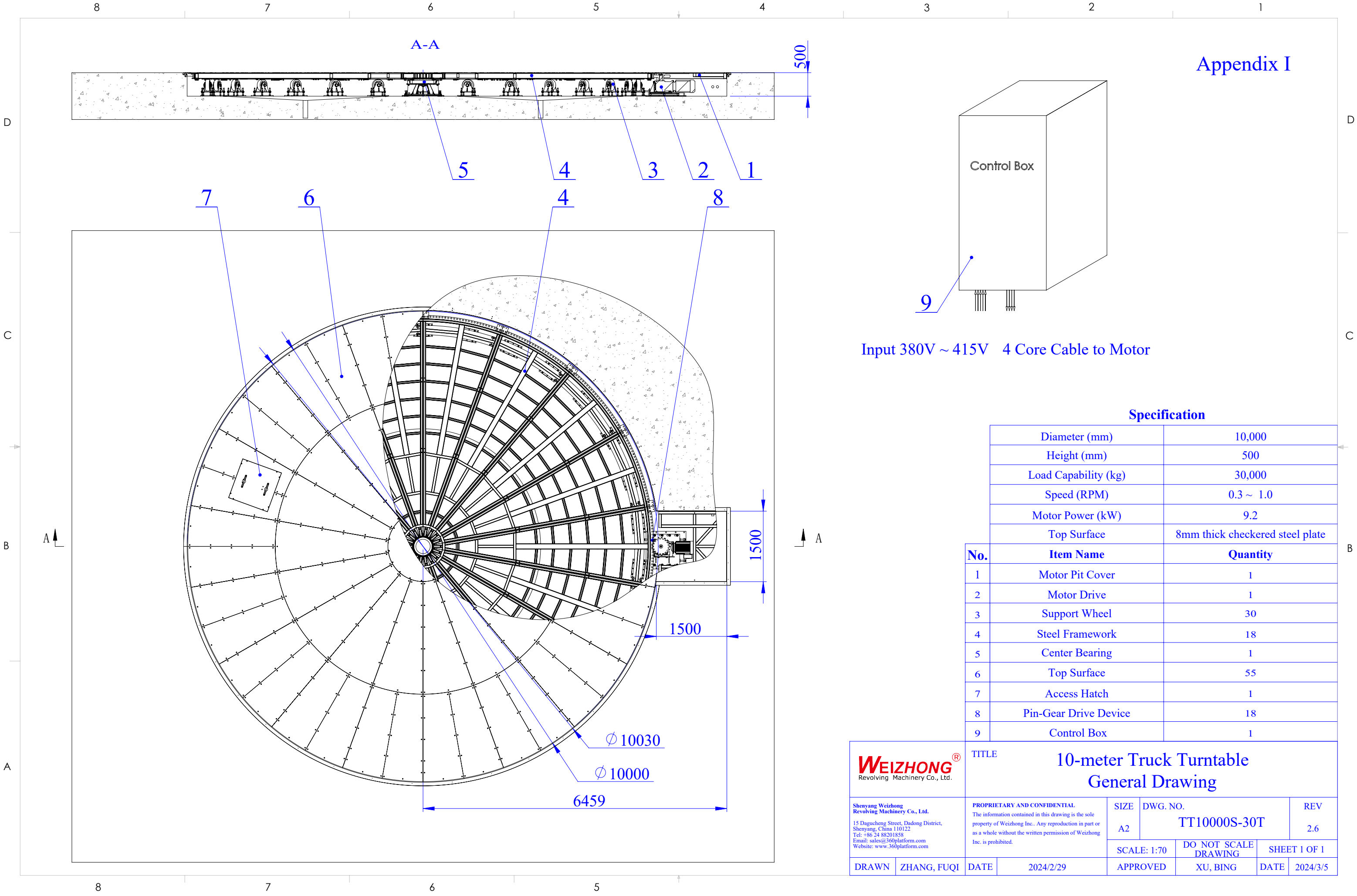
Function:	On/Off, clockwise/anti-clockwise, various speed control, emergency stop
Power Required:	3 Phase 380 ~ 415V/50Hz AC; Max current: 30A
Control Box:	Fixed installation
Remote Control:	Optional

### General Information:

General Drawing:	Appendix I
3D Sketch:	Appendix II
Pit Drawing:	Appendix III

### Note:

The unit of length used in all drawings is metric millimeter



Appendix I

Control Box

Input 380V ~ 415V 4 Core Cable to Motor

Specification

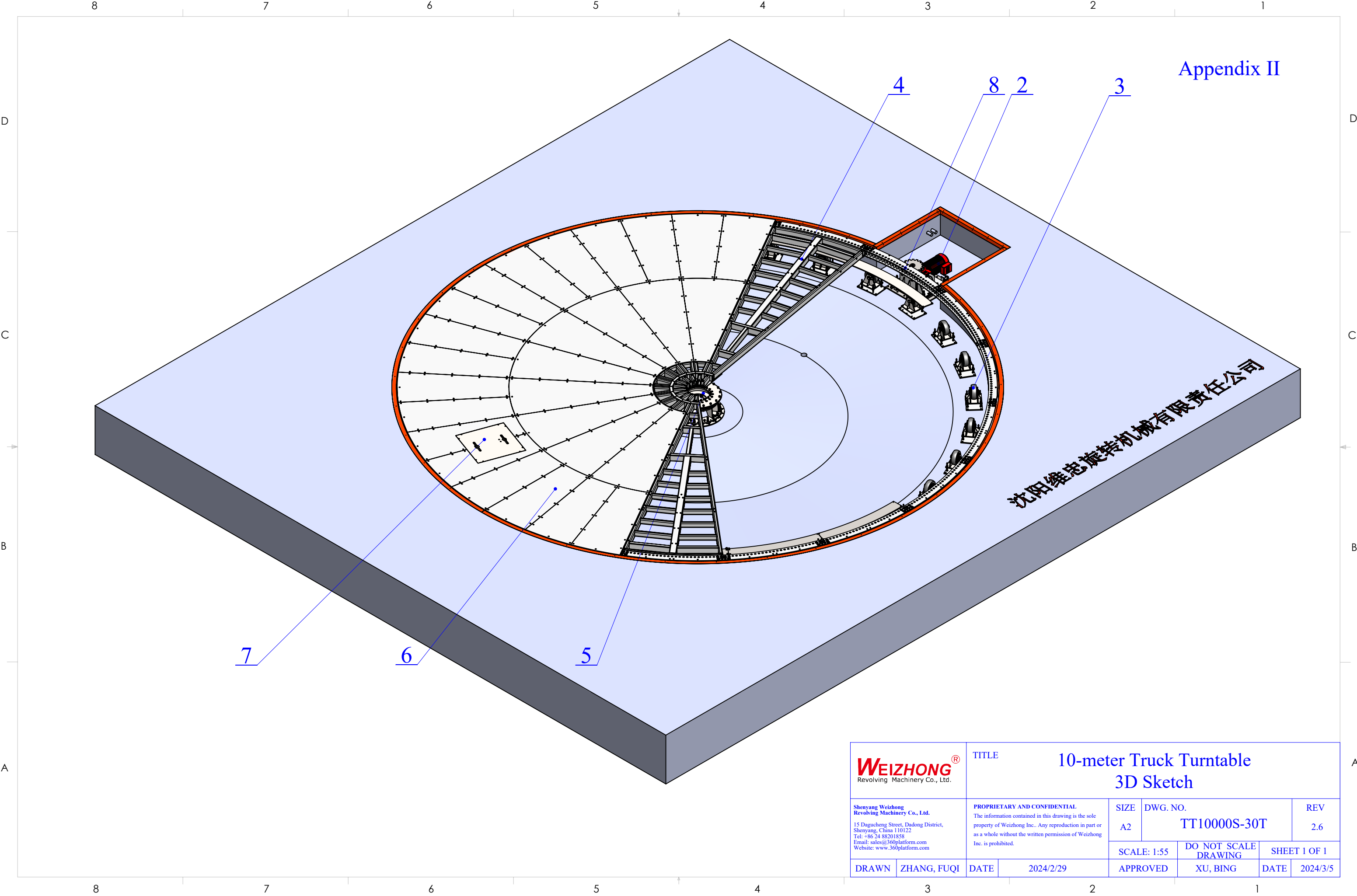
	Diameter (mm)	10,000
	Height (mm)	500
	Load Capacity (kg)	30,000
	Speed (RPM)	0.3 ~ 1.0
	Motor Power (kW)	9.2
	Top Surface	8mm thick checkered steel plate
No.	Item Name	Quantity
1	Motor Pit Cover	1
2	Motor Drive	1
3	Support Wheel	30
4	Steel Framework	18
5	Center Bearing	1
6	Top Surface	55
7	Access Hatch	1
8	Pin-Gear Drive Device	18
9	Control Box	1

**WEIZHONG®**  
Revolving Machinery Co., Ltd.

Shenyang Weizhong  
Revolving Machinery Co., Ltd.  
15 Dagucheng Street, Dadong District,  
Shenyang, China 110122  
Tel: +86 24 88201858  
Email: sales@360platform.com  
Website: www.360platform.com

TITLE  
**10-meter Truck Turntable  
General Drawing**

PROPRIETARY AND CONFIDENTIAL The information contained in this drawing is the sole property of Weizhong Inc.. Any reproduction in part or as a whole without the written permission of Weizhong Inc. is prohibited.	SIZE A2	DWG. NO. TT10000S-30T	REV 2.6
DRAWN ZHANG, FUQI	DATE 2024/2/29	SCALE: 1:70 APPROVED	DO NOT SCALE DRAWING XU, BING SHEET 1 OF 1 DATE 2024/3/5



Appendix II

<div>WEIZHONG®</div> <div>Revolving Machinery Co., Ltd.</div>		<div>TITLE</div> <div>10-meter Truck Turntable</div> <div>3D Sketch</div>						
<div>Shenyang Weizhong Revolving Machinery Co., Ltd.</div> <div>15 Dagucheng Street, Dadong District, Shenyang, China 110122 Tel: +86 24 88201858 Email: sales@360platform.com Website: www.360platform.com</div>		<div>PROPRIETARY AND CONFIDENTIAL</div> <div>The information contained in this drawing is the sole property of Weizhong Inc.. Any reproduction in part or as a whole without the written permission of Weizhong Inc. is prohibited.</div>		<div>SIZE</div> <div>A2</div>	<div>DWG. NO.</div> <div>TT10000S-30T</div>		<div>REV</div> <div>2.6</div>	
				<div>SCALE: 1:55</div>	<div>DO NOT SCALE DRAWING</div>	<div>SHEET 1 OF 1</div>		
		<div>DRAWN</div> <div>ZHANG, FUQI</div>	<div>DATE</div> <div>2024/2/29</div>	<div>APPROVED</div>	<div>XU, BING</div>	<div>DATE</div>	<div>2024/3/5</div>	

