

11-meter Truck Turntable Specification

Model: TT11000S-30T

Turntable Details:

Diameter:	11,000 mm
Height:	500 mm
Load Capability:	≤ 30,000 kg
Rotation Speed:	0.3 ~ 1.0 RPM
Speed Control:	Various speed control
Motor Power:	9.2 kW
Top Surface:	8 mm thick checkered steel plate
Installation Weight:	15,700 kg
Turntable foundation:	Concrete pit
Uniformly distributed load:	4 kPa

Design and Construction:

The design of turntable includes:

Structure:	Fan-shaped Structure frame combined
Center bearing, Motor drive, Support Wheels:	Fixed to the ground
Drive Method:	Weizhong Patent Pin-Gear Drive System
Surface Treatment:	Hot-dipped galvanized

Control System Information:

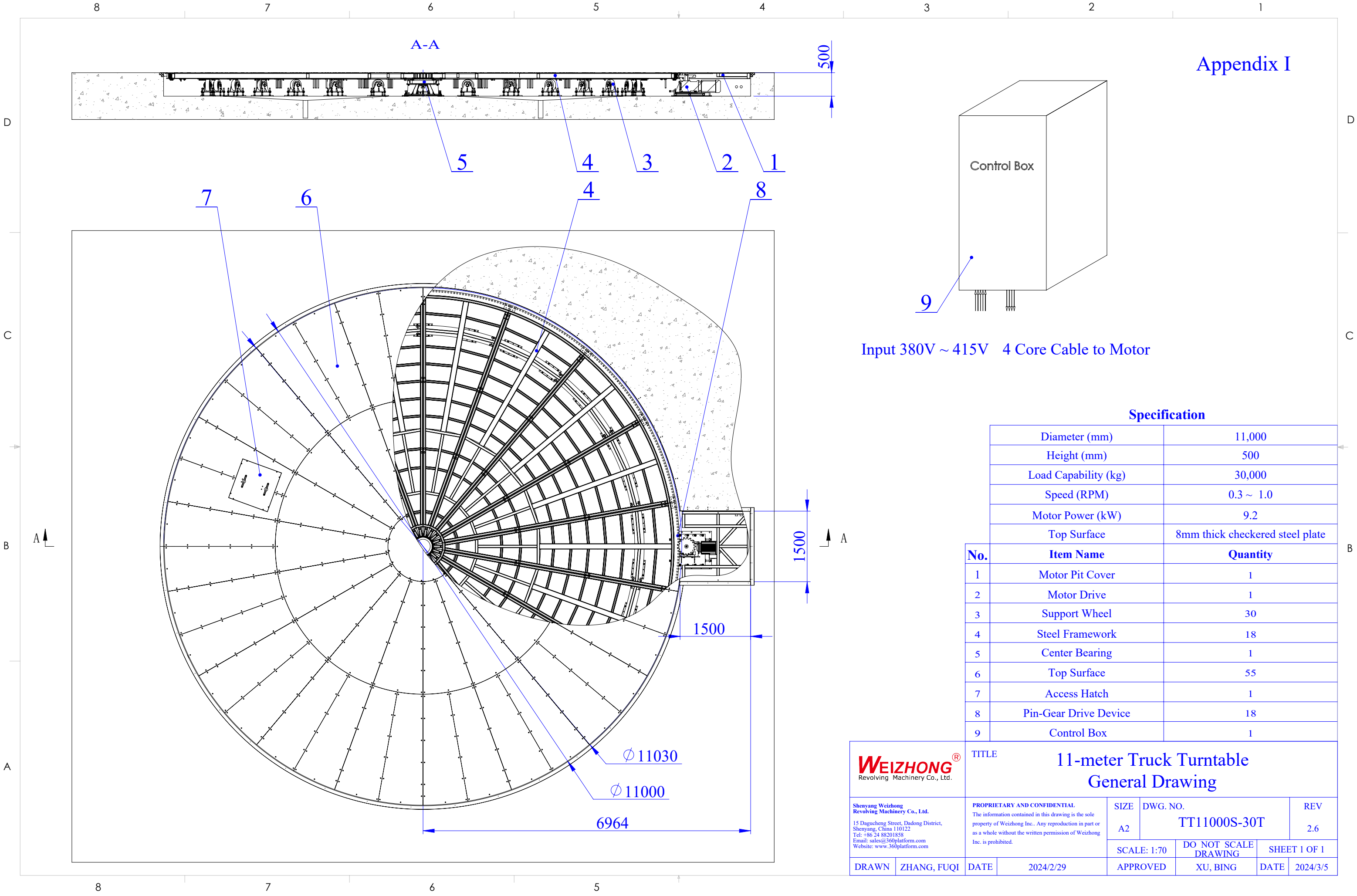
Function:	On/Off, clockwise/anti-clockwise, various speed control, emergency stop
Power Required:	3 Phase 380 ~ 415V/50Hz AC; Max current: 30A
Control Box:	Fixed installation
Remote Control:	Optional

General Information:

General Drawing:	Appendix I
3D Sketch:	Appendix II
Pit Drawing:	Appendix III

Note:

The unit of length used in all drawings is metric millimeter



8 7 6 5 4 3 2 1

Appendix II

D

D

C

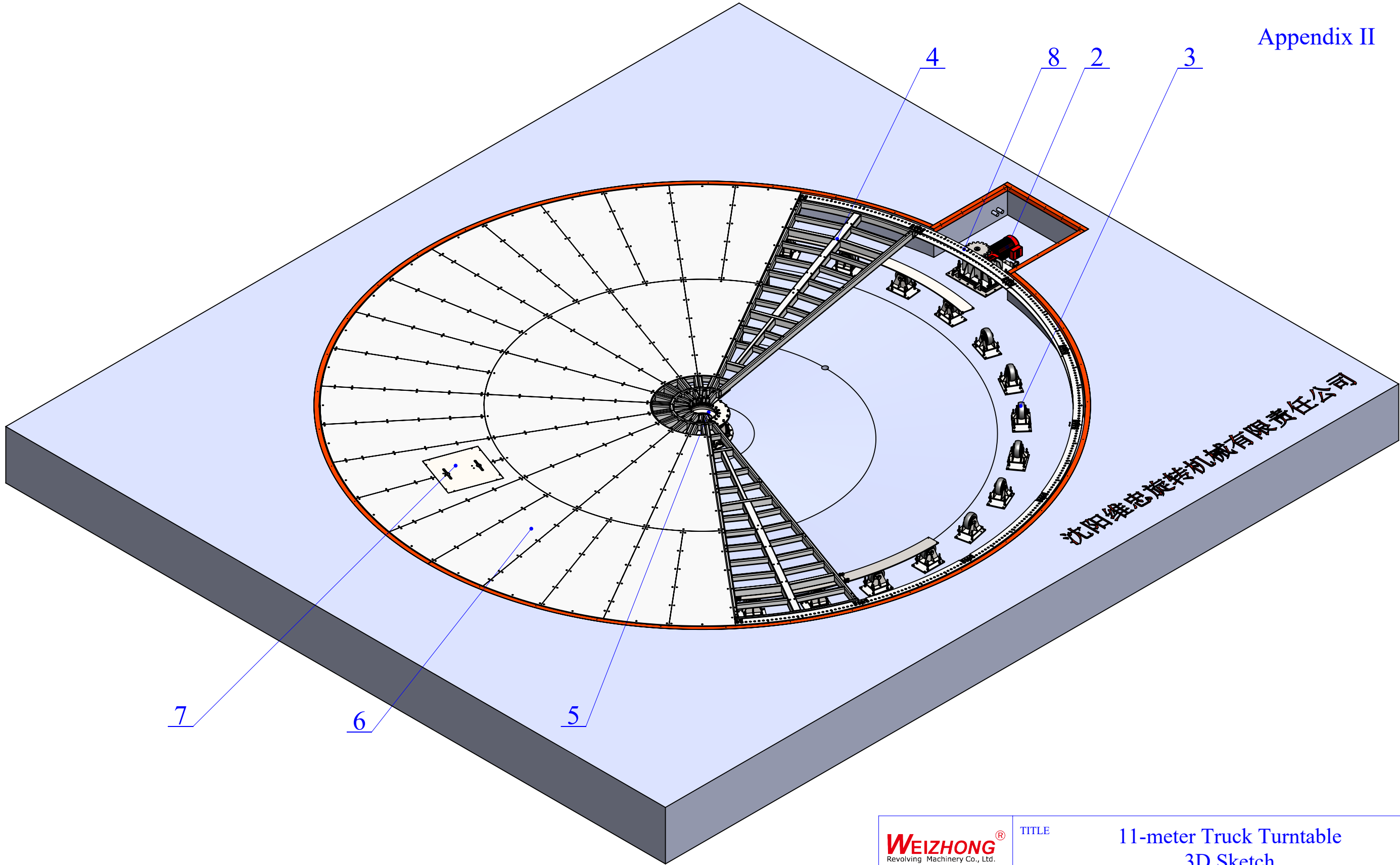
C

B

B

A

A



<div><div>WEIZHONG®</div><div>Revolving Machinery Co., Ltd.</div></div> <div>Shenyang Weizhong Revolving Machinery Co., Ltd. 15 Dagucheng Street, Dadong District, Shenyang, China 110122 Tel: +86 24 88201858 Email: sales@360platform.com Website: www.360platform.com</div>		TITLE11-meter Truck Turntable 3D Sketch			
		PROPRIETARY AND CONFIDENTIAL The information contained in this drawing is the sole property of Weizhong Inc.. Any reproduction in part or as a whole without the written permission of Weizhong Inc. is prohibited.	SIZEA2	DWG. NO. TT11000S-30T	REV 2.6
DRAWNZHANG, FUQI		DATE2024/2/29	SCALE: 1:55	DO NOT SCALE DRAWING	SHEET 1 OF 1
			APPROVED	XU, BING	DATE2024/3/5

8 7 6 5 4 3 2 1

