

## 15-meter Truck Turntable Specification

Model: TT15000S-45T

### Turntable Details:

Diameter:	15,000 mm
Height:	500 mm
Load Capability:	≤ 45,000 kg
Rotation Speed:	0.1 ~ 0.5 RPM
Speed Control:	Various speed control
Motor Power:	9.2 kW
Top Surface:	8mm thick checkered steel plate
Installation Weight:	27,300 kg
Turntable foundation:	Concrete pit
Uniformly distributed load:	4.09 kPa

### Design and Construction:

The design of turntable includes:

Structure:	Fan-shaped Structure frame combined
Center bearing, Motor drive, Support Wheels:	Fixed to the ground
Drive Method:	Weizhong Patent Pin-Gear Drive System
Surface Treatment:	Hot-dipped galvanized

### Control System Information:

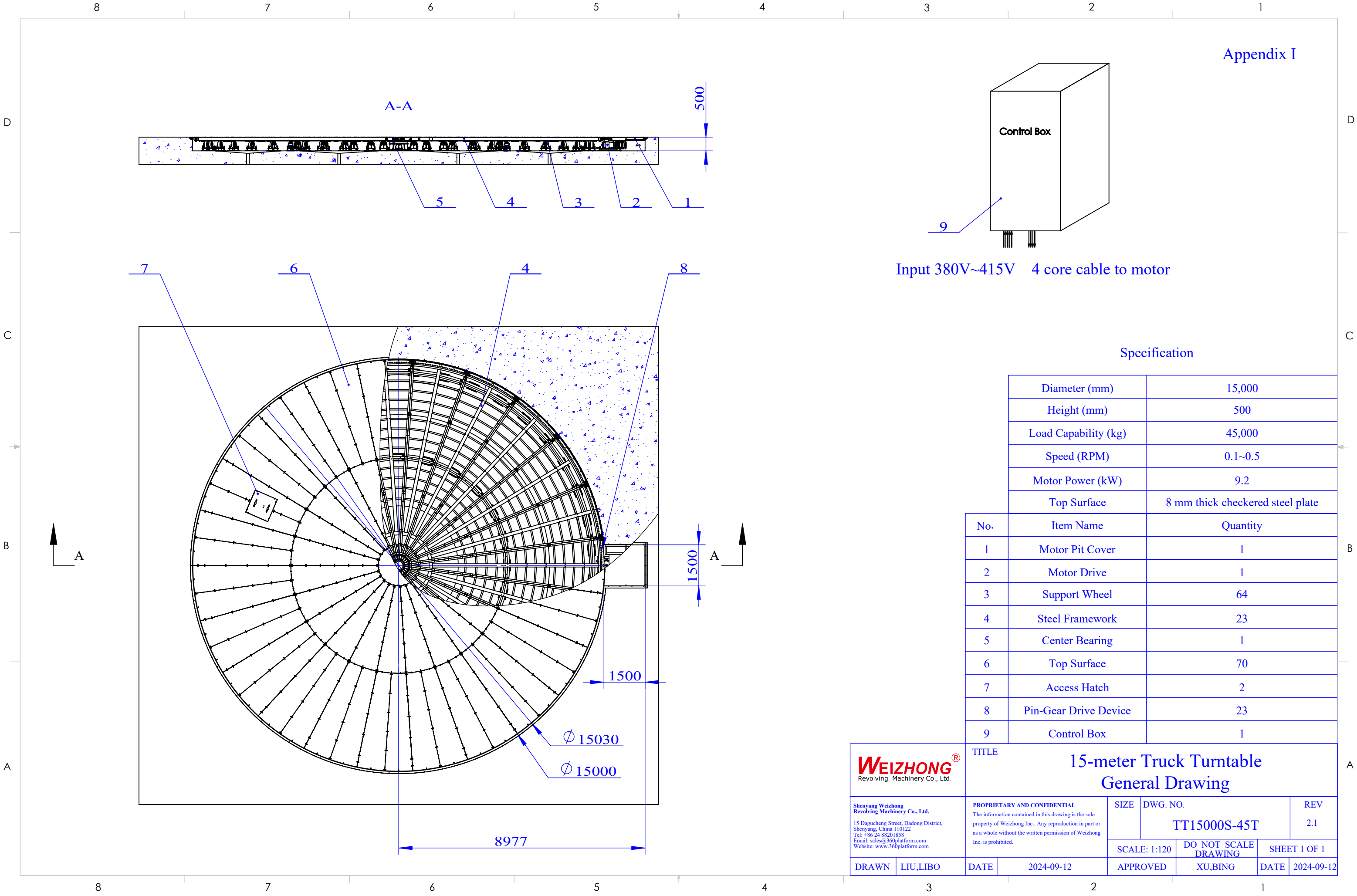
Function:	On/Off, clockwise/anti-clockwise, various speed control, emergency stop
Power Required:	3 phase 380~415V/50HZ AC; Max current: 30A
Control Box:	Fixed installation
Remote Control:	Optional

### General Information:

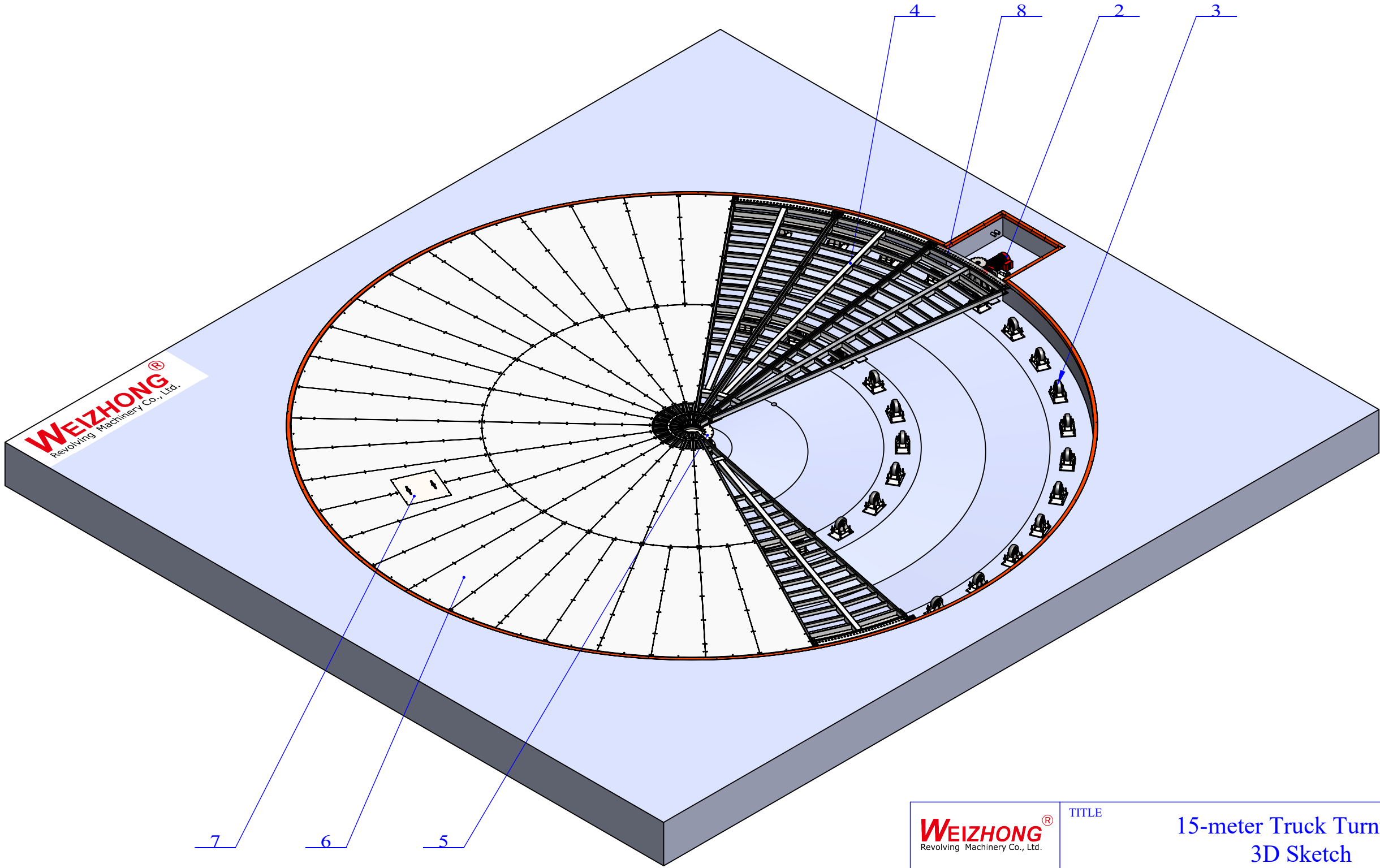
General Drawing:	Appendix I
3D Sketch:	Appendix II
Pit Drawing:	Appendix III

### Note:

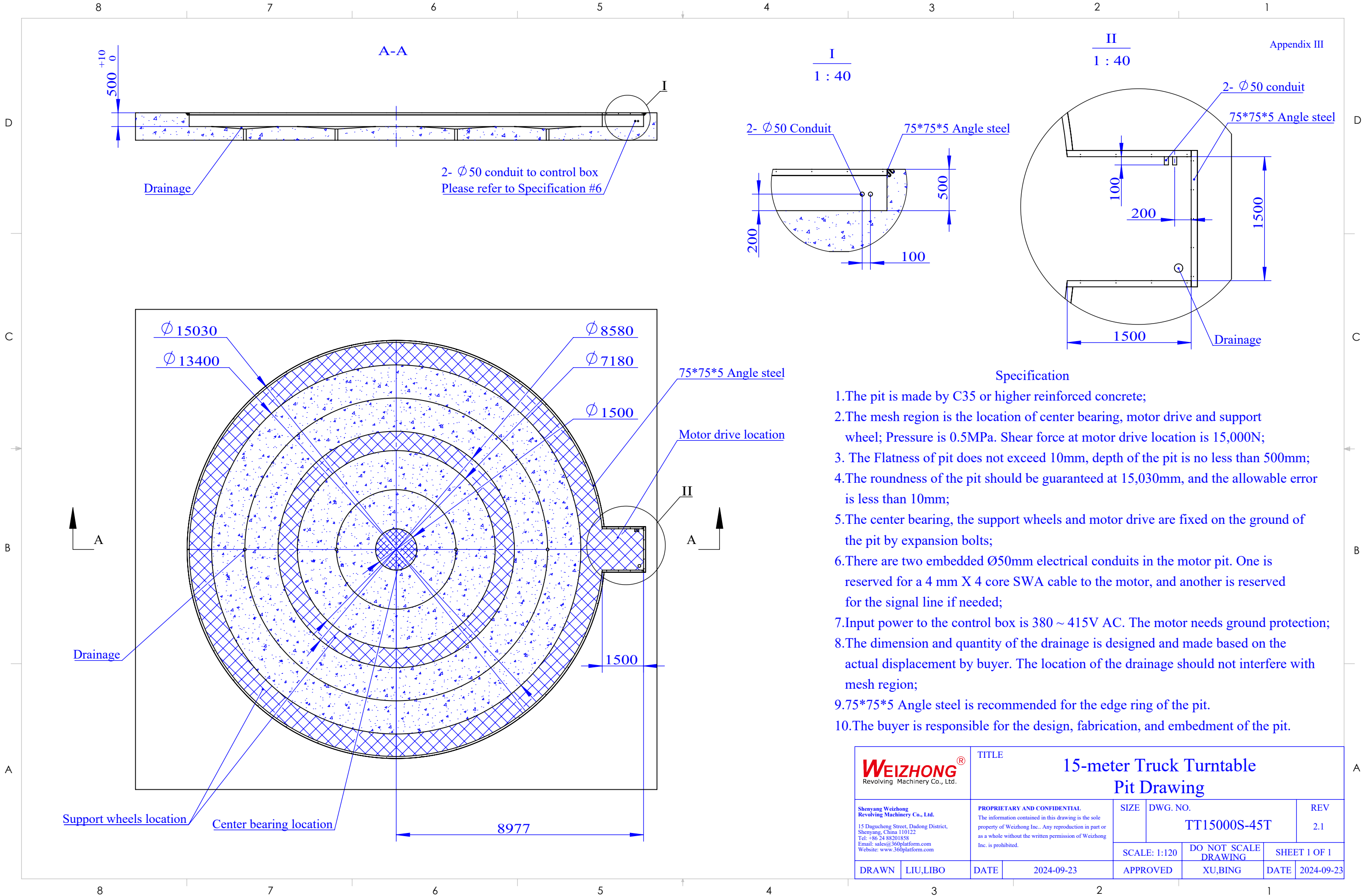
The unit of length used in all drawings is metric millimeter



<div><div><div>WEIZHONG<sup>®</sup></div><div>Revolving Machinery Co., Ltd.</div><div>15 Dagucheng Street, Dadong District, Shenyang, China 110122 Tel: +86 24 88201858 Email: sales@360platform.com Website: www.360platform.com</div></div><div><div>TITLE</div><div>15-meter Truck Turntable General Drawing</div></div></div>								
<div>Shenyang Weizhong Revolving Machinery Co., Ltd.</div> <div>15 Dagucheng Street, Dadong District, Shenyang, China 110122 Tel: +86 24 88201858 Email: sales@360platform.com Website: www.360platform.com</div>		<div>PROPRIETARY AND CONFIDENTIAL</div> <div>The information contained in this drawing is the sole property of Weizhong Inc.. Any reproduction in part or as a whole without the written permission of Weizhong Inc. is prohibited.</div>		SIZE	DWG. NO.		REV	
				TT15000S-45T		2.1		
				SCALE: 1:120	DO NOT SCALE DRAWING		SHEET 1 OF 1	
DRAWN	LIU,LIBO	DATE	2024-09-12	APPROVED	XU,BING		DATE	2024-09-12



<div><div><div>WEIZHONG®</div><div>Revolving Machinery Co., Ltd.</div></div></div>		<div>TITLE</div> <div>15-meter Truck Turntable</div> <div>3D Sketch</div>						
<div>Shenyang Weizhong Revolving Machinery Co., Ltd.</div> <div>15 Dagucheng Street, Dadong District, Shenyang, China 110122 Tel: +86 24 88201858 Email: sales@360platform.com Website: www.360platform.com</div>		<div>PROPRIETARY AND CONFIDENTIAL</div> <div>The information contained in this drawing is the sole property of Weizhong Inc.. Any reproduction in part or as a whole without the written permission of Weizhong Inc. is prohibited.</div>		SIZE	DWG. NO.		REV	
				TT15000S-45T		2.1		
DRAWN	LIU,LIBO	DATE	2024-09-09	APPROVED	DO NOT SCALE DRAWING		SHEET 1 OF 1	
				XU,BING		DATE	2024-09-09	



- Specification
- 1.The pit is made by C35 or higher reinforced concrete;
  - 2.The mesh region is the location of center bearing, motor drive and support wheel; Pressure is 0.5MPa. Shear force at motor drive location is 15,000N;
  3. The Flatness of pit does not exceed 10mm, depth of the pit is no less than 500mm;
  - 4.The roundness of the pit should be guaranteed at 15,030mm, and the allowable error is less than 10mm;
  - 5.The center bearing, the support wheels and motor drive are fixed on the ground of the pit by expansion bolts;
  - 6.There are two embedded Ø50mm electrical conduits in the motor pit. One is reserved for a 4 mm X 4 core SWA cable to the motor, and another is reserved for the signal line if needed;
  - 7.Input power to the control box is 380 ~ 415V AC. The motor needs ground protection;
  - 8.The dimension and quantity of the drainage is designed and made based on the actual displacement by buyer. The location of the drainage should not interfere with mesh region;
  - 9.75\*75\*5 Angle steel is recommended for the edge ring of the pit.
  - 10.The buyer is responsible for the design, fabrication, and embedment of the pit.

<b>WEIZHONG®</b> Revolving Machinery Co., Ltd.		TITLE <b>15-meter Truck Turntable Pit Drawing</b>			
Shenyang Weizhong Revolving Machinery Co., Ltd. 15 Dagucheng Street, Dadong District, Shenyang, China 110122 Tel: +86 24 88201858 Email: sales@360platform.com Website: www.360platform.com		PROPRIETARY AND CONFIDENTIAL The information contained in this drawing is the sole property of Weizhong Inc.. Any reproduction in part or as a whole without the written permission of Weizhong Inc. is prohibited.		SIZE	REV
				DWG. NO. <b>TT15000S-45T</b>	2.1
DRAWN		DATE		SCALE: 1:120	SHEET 1 OF 1
LIU,LIBO		2024-09-23		DO NOT SCALE DRAWING	DATE
				APPROVED	2024-09-23
				XU,BING	