

## 18-meter Truck Turntable Specification

Model: TT18000S-45T

### Turntable Details:

Diameter:	18,000 mm
Height:	500 mm
Load Capability:	≤ 45,000 kg
Rotation Speed:	0.1 ~ 0.5 RPM
Speed Control:	Various speed control
Motor Power:	9.2 kW
Top Surface:	8 mm thick checkered steel plate
Installation Weight:	39,540 kg
Turntable foundation:	Concrete pit
Uniformly distributed load:	3.32 kPa

### Design and Construction:

The design of turntable includes:

Structure:	Fan-shaped Structure frame combined
Center bearing, Motor drive, Support Wheels:	Fixed to the ground
Drive Method:	Weizhong Patent Pin-Gear Drive System
Surface Treatment:	Hot-dipped galvanized

### Control System Information:

Function:	On/Off, clockwise/anti-clockwise, various speed control, emergency stop
Power Required:	3 phase 380~415V/50HZ AC; Max current: 30A
Control Box:	Fixed installation
Remote Control:	Optional

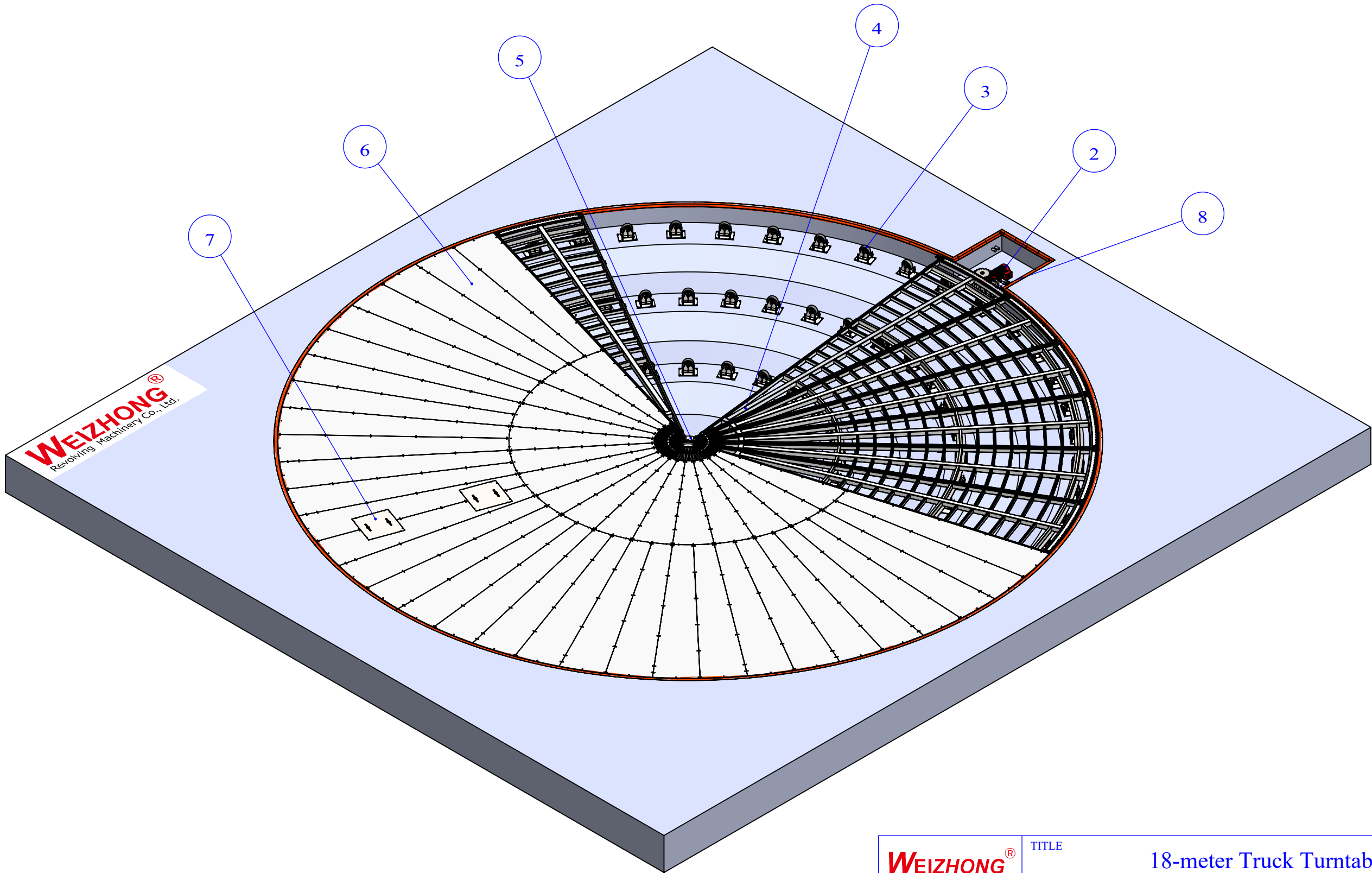
### General Information:

General Drawing:	Appendix I
3D Sketch:	Appendix II
Pit Drawing:	Appendix III

### Note:

The unit of length used in all drawings is metric millimeter





<b>WEIZHONG®</b> Revolving Machinery Co., Ltd.		TITLE 18-meter Truck Turntable 3D Sketch			
Shenyang Weizhong Revolving Machinery Co., Ltd. 15 Dagucheng Street, Dadong District, Shenyang, China 110122 Tel: +86 24 88201858 Email: sales@360platform.com Website: www.360platform.com		PROPRIETARY AND CONFIDENTIAL The information contained in this drawing is the sole property of Weizhong Inc.. Any reproduction in part or as a whole without the written permission of Weizhong Inc. is prohibited.		SIZE	DWG. NO.
				SCALE: 1:90	TT18000S-45T
DRAWN		LIU,LIBO	DATE	2024-09-09	REV 2.1
APPROVED		XU,BING	DATE	2024-09-09	SHEET 1 OF 1

D

C

B

A

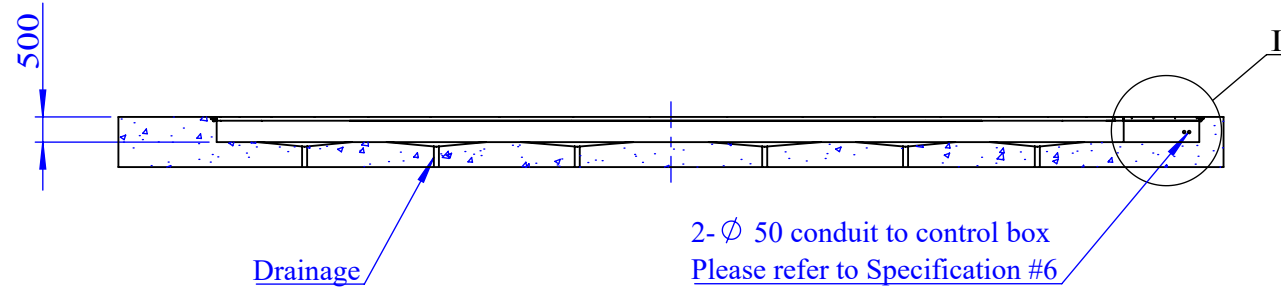
D

C

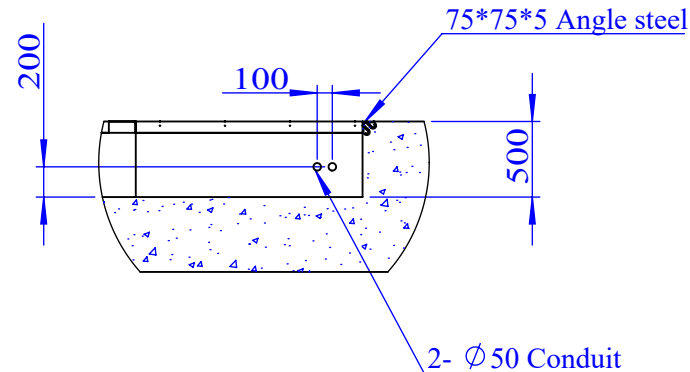
B

A

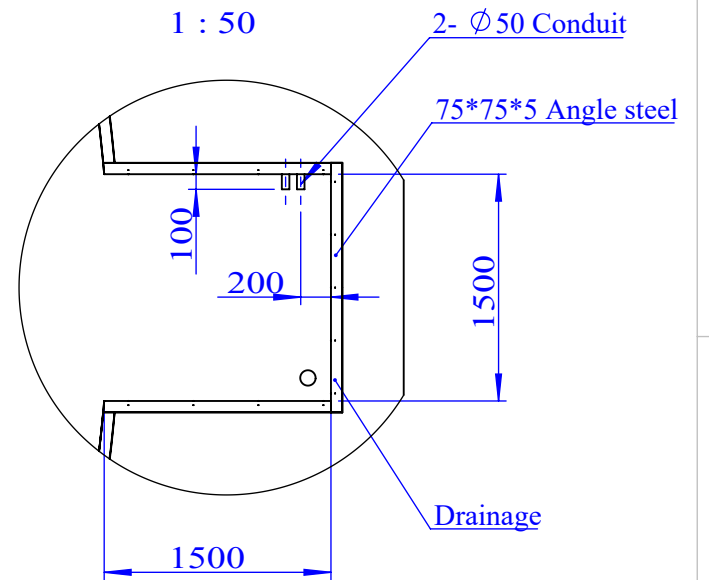
A-A



I  
1 : 50

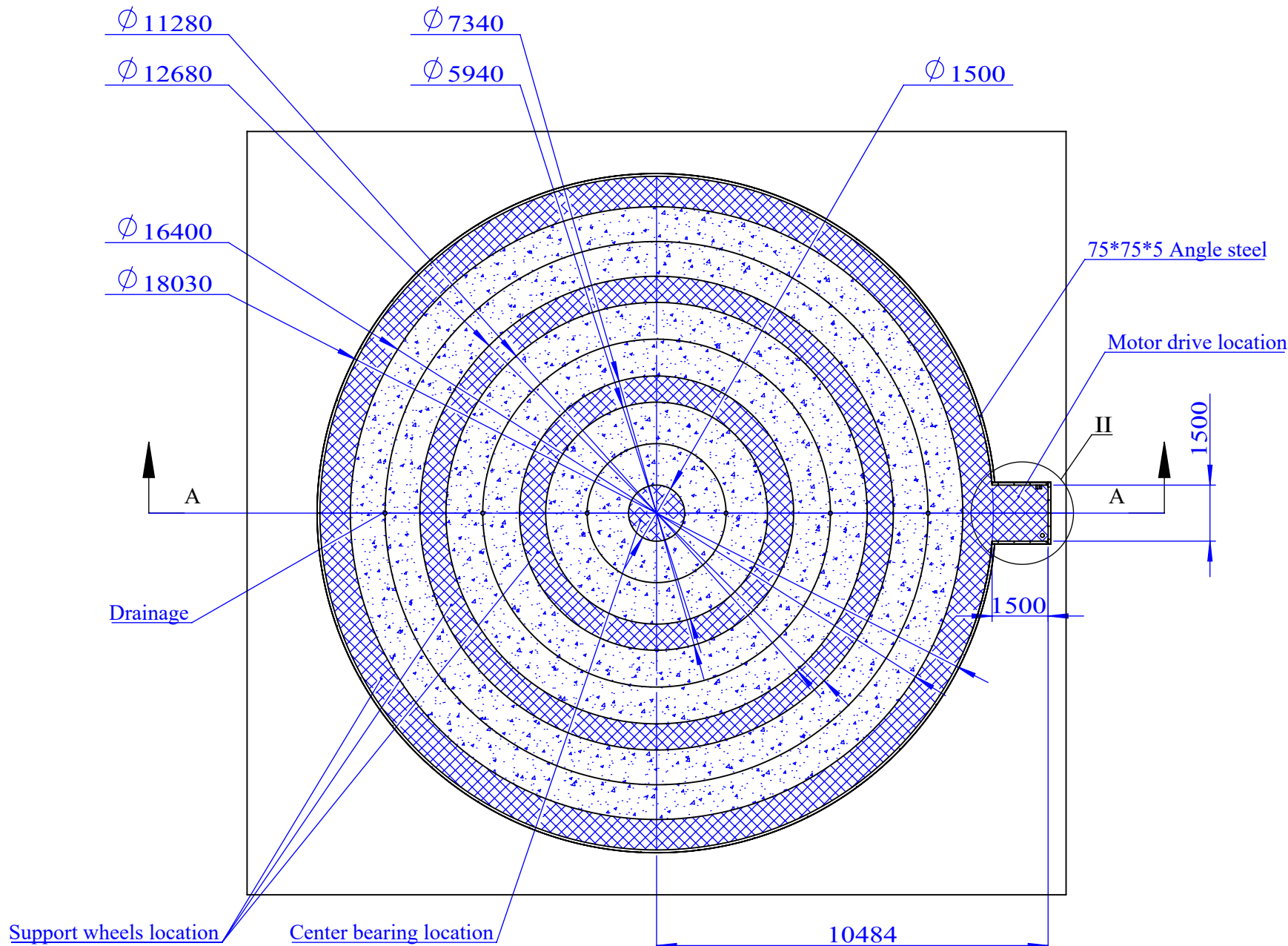



II  
1 : 50



### Specification

- 1.The pit is made by C35 or higher reinforced concrete;
- 2.The mesh region is the location of center bearing, motor drive and support wheel; Pressure is 0.5MPa. Shear force at motor drive location is 15,000N;
3. The Flatness of pit does not exceed 10mm, depth of the pit is no less than 500mm;
- 4.The roundness of the pit should be guaranteed at 18,030mm, and the allowable error is less than 10mm;
- 5.The center bearing, the support wheels and motor drive are fixed on the ground of the pit by expansion bolts;
- 6.There are two embedded  $\Phi$ 50mm electrical conduits in the motor pit. One is reserved for a 4 mm X 4 core SWA cable to the motor, and another is reserved for the signal line if needed;
- 7.Input power to the control box is 380 ~ 415V AC. The motor needs ground protection;
- 8.The dimension and quantity of the drainage is designed and made based on the actual displacement by buyer. The location of the drainage should not interfere with mesh region;
- 9.75\*75\*5 Angle steel is recommended for the edge ring of the pit.
- 10.The buyer is responsible for the design, fabrication, and embedment of the pit.



 Shenyang Weizhong Revolving Machinery Co., Ltd. 15 Dagucheng Street, Dadong District, Shenyang, China 110122 Tel: +86-24 88201858 Email: sales@360platform.com Website: www.360platform.com		TITLE <b>18-meter Truck Turntable Pit Drawing</b>			
		PROPRIETARY AND CONFIDENTIAL The information contained in this drawing is the sole property of Weizhong Inc.. Any reproduction in part or as a whole without the written permission of Weizhong Inc. is prohibited.	SIZE DWG. NO. <b>TT18000S-45T</b>	REV <b>2.1</b>	
DRAWN	LIU.LIBO	DATE	2024-09-27	SCALE: 1:150	DO NOT SCALE DRAWING
		APPROVED	XU,BING	SHEET 1 OF 1	DATE
			2024-09-27		