

8-meter Truck Turntable Specification

Model: TT8000S-30T

Turntable Details:

Diameter:	8,000 mm
Height:	500 mm
Load Capability:	≤ 30,000 kg
Rotation Speed:	0.3 ~ 1.0 RPM
Speed Control:	Various speed control
Motor Power:	9.2 kW
Top Surface:	8 mm thick checkered steel plate
Installation Weight:	10,000 kg
Turntable foundation:	Concrete pit
Uniformly distributed load:	4 kPa

Design and Construction:

The design of turntable includes:

Structure:	Fan-shaped Structure frame combined
Center bearing, Motor drive, Support Wheels:	Fixed to the ground
Drive Method:	Weizhong Patent Pin-Gear Drive System
Surface Treatment:	Hot-dipped galvanized

Control System Information:

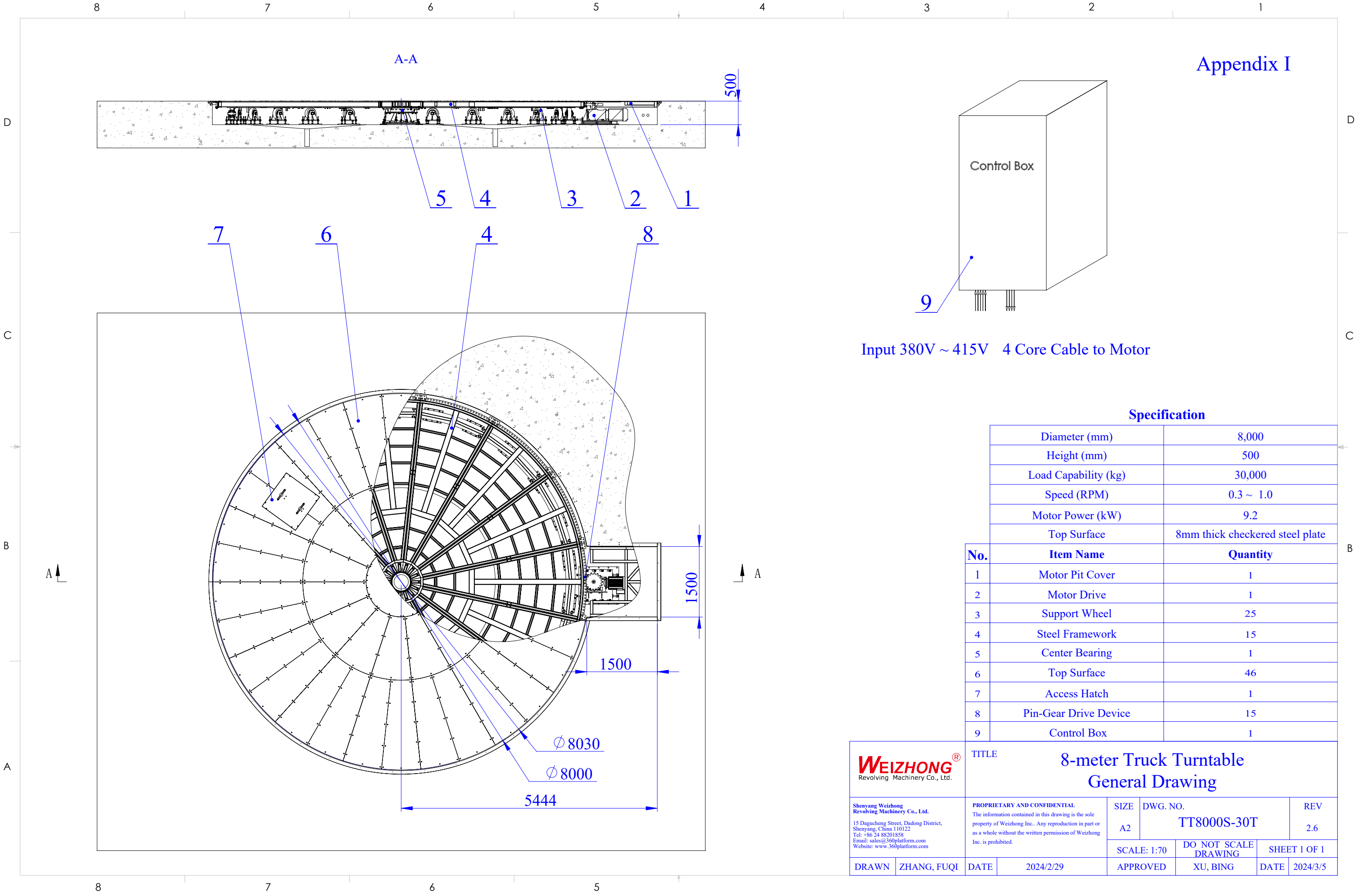
Function:	On/Off, clockwise/anti-clockwise, various speed control, emergency stop
Power Required:	3 Phase 380 ~ 415V/50Hz AC; Max current: 30A
Control Box:	Fixed installation
Remote Control:	Optional

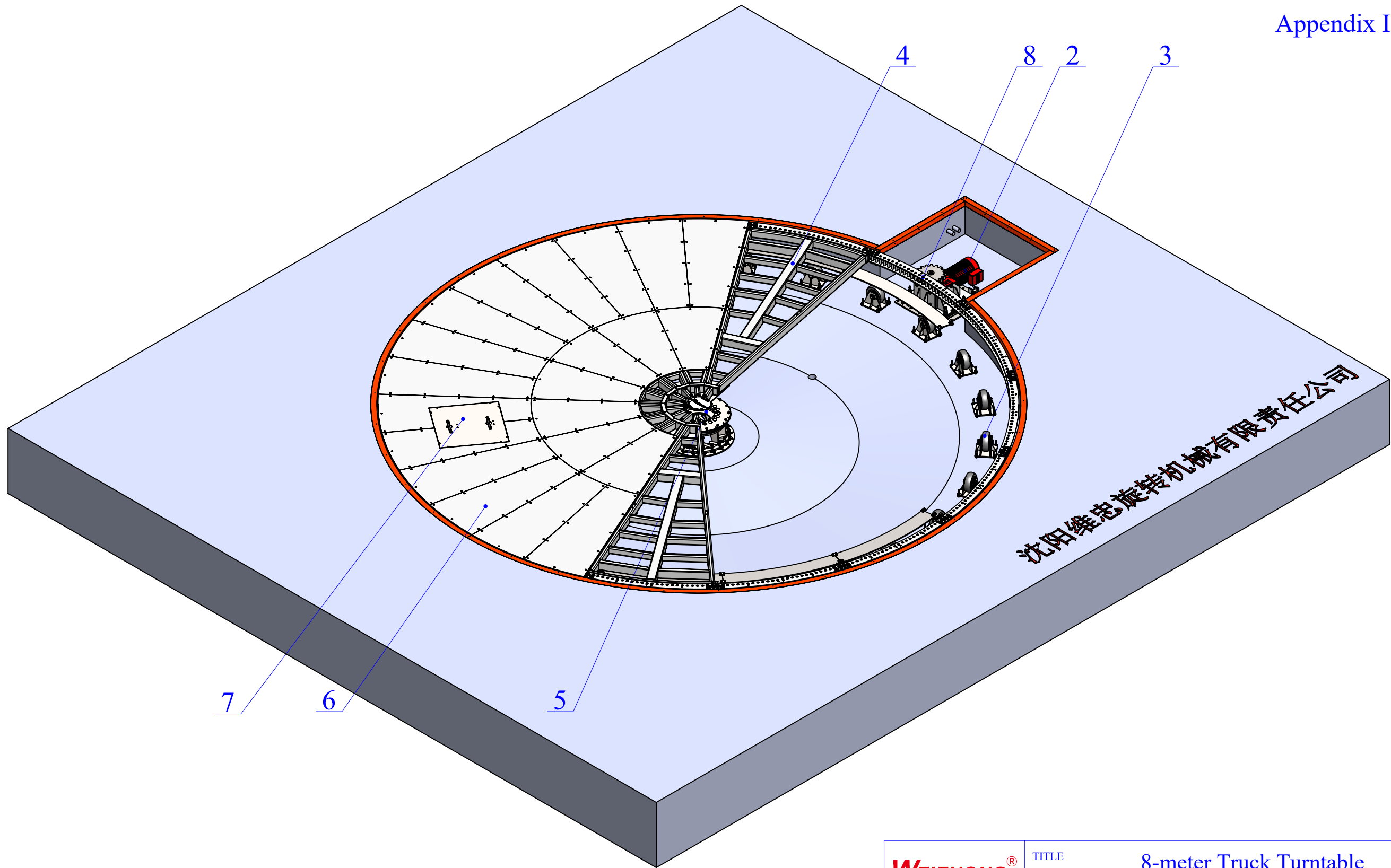
General Information:

General Drawing:	Appendix I
3D Sketch:	Appendix II
Pit Drawing:	Appendix III

Note:

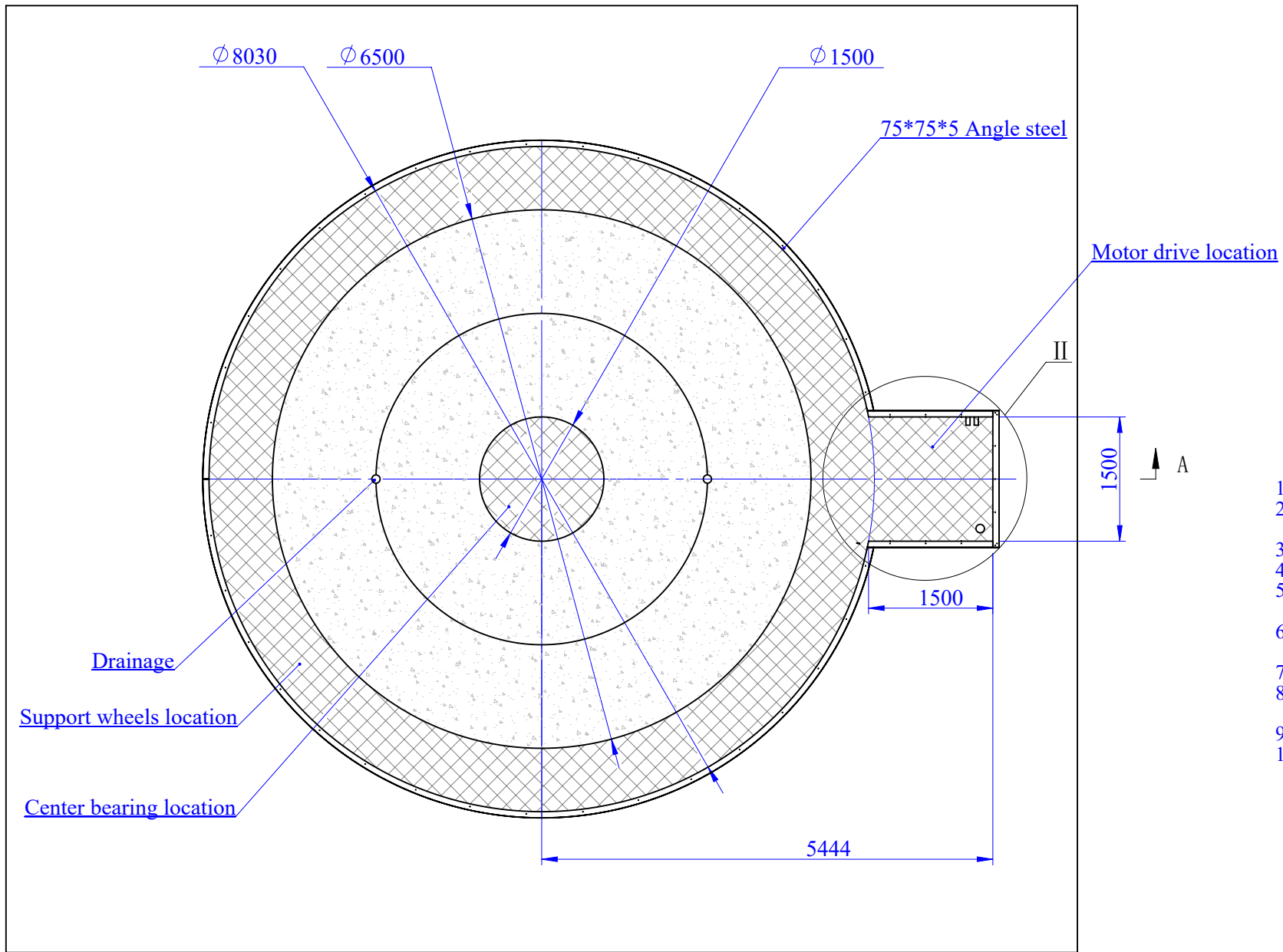
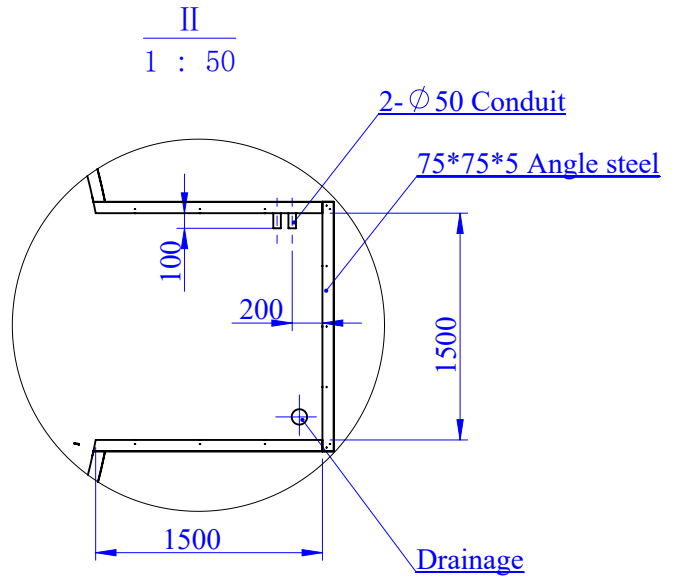
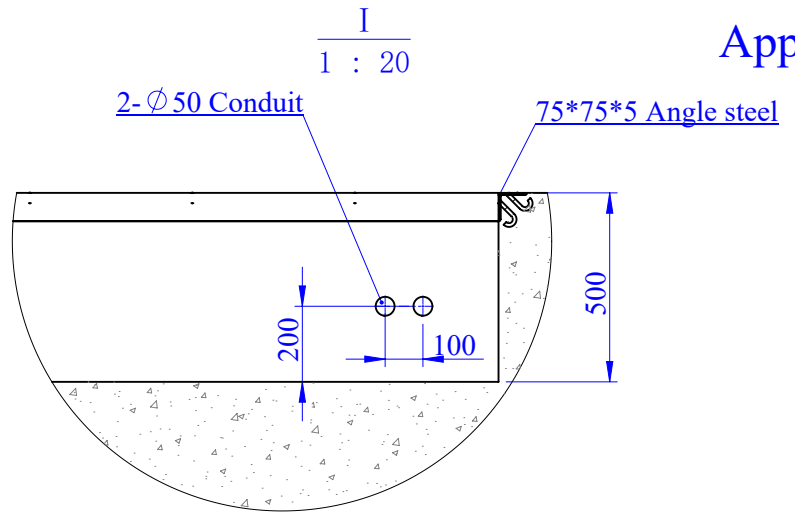
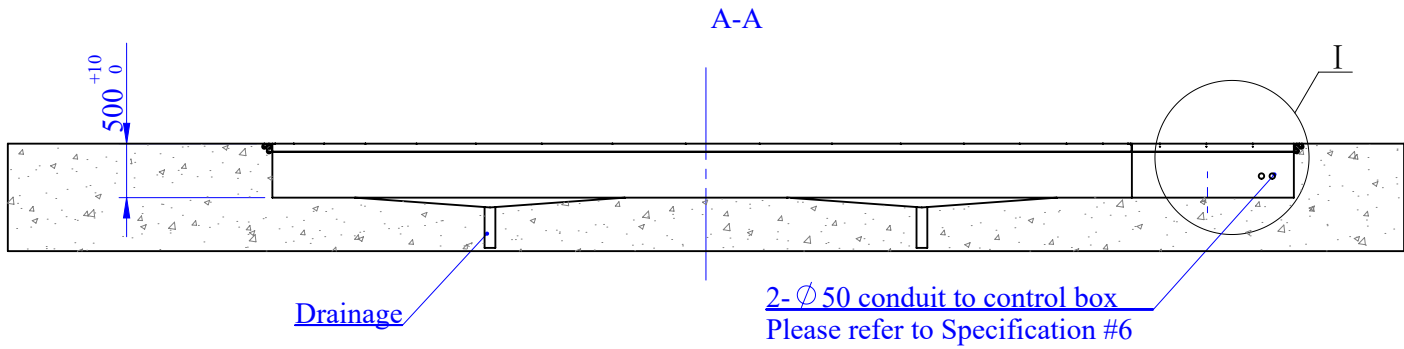
The unit of length used in all drawings is metric millimeter





Appendix II

<div><div>WEIZHONG®</div><div>Revolving Machinery Co., Ltd.</div></div> <div>Shenyang Weizhong Revolving Machinery Co., Ltd. 15 Dagucheng Street, Dadong District, Shenyang, China 110122 Tel: +86 24 88201858 Email: sales@360platform.com Website: www.360platform.com</div>		TITLE8-meter Truck Turntable 3D Sketch			
		SIZEA2	DWG. NO.TT8000S-30T		REV2.6
		SCALE: 1:50		DO NOT SCALE DRAWING	SHEET 1 OF 1
DRAWN	ZHANG, FUQI	DATE	2024/2/29		APPROVED
				XU, BING	DATE2024/3/5



Specification

1. The pit is made by C30 or higher reinforced concrete.
2. The mesh region is the location of the center bearing, the motor drive, and the support wheels; Pressure is 0.5 Mpa. Shear force at the motor drive is 15,000 N.
3. The flatness of the pit does not exceed 10 mm and depth of the pit is no less than 500 mm.
4. The roundness of the pit should be guaranteed at 8,030 mm, and the allowable error is less than 10 mm.
5. The center bearing, the support wheels and the motor drive are fixed on the ground of the pit by expansion bolts.
6. There are two embedded Ø50mm electrical conduits in the motor pit. One is reserved for a 4 mm X 4 core SWA cable to the motor, and another is reserved for the signal line if needed.
7. Input power to the control box is 380 ~ 415V AC. The motor needs ground protection.
8. The dimension and quantity of the drainage is designed and made based on the actual displacement by the buyer. The location of the drainage should not interfere with mesh region.
9. 75*75*5 Angle steel is recommended for the edge ring of the pit.
10. The buyer is responsible for the design, fabrication, and embedment of the pit.

<div>WEIZHONG® Revolving Machinery Co., Ltd.</div>		<div>TITLE</div> <div>8-meter Truck Turntable Pit Drawing</div>							
<div>Shenyang Weizhong Revolving Machinery Co., Ltd.</div> <div>15 Dagucheng Street, Dadong District, Shenyang, China 110122 Tel: +86 24 88201858 Email: sales@360platform.com Website: www.360platform.com</div>		<div>PROPRIETARY AND CONFIDENTIAL</div> <div>The information contained in this drawing is the sole property of Weizhong Inc.. Any reproduction in part or as a whole without the written permission of Weizhong Inc. is prohibited.</div>		<div>SIZE</div> <div>A2</div>	<div>DWG. NO.</div> <div>TT8000S-30T</div>		<div>REV</div> <div>2.6</div>		
				<div>SCALE: 1:70</div>		<div>DO NOT SCALE DRAWING</div>		<div>SHEET 1 OF 1</div>	
<div>DRAWN</div>	<div>ZHANG, FUQI</div>	<div>DATE</div>	<div>2024/2/29</div>		<div>APPROVED</div>		<div>XU, BING</div>	<div>DATE</div>	<div>2024/3/5</div>